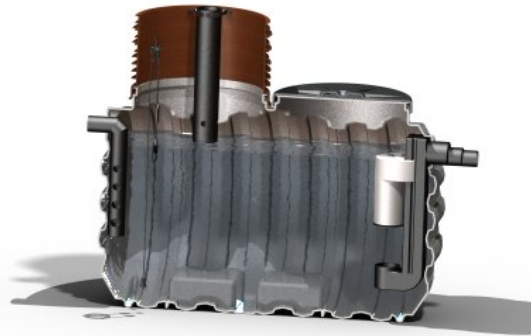


PODATKI SEPARATORJEV OLJA

OPIS

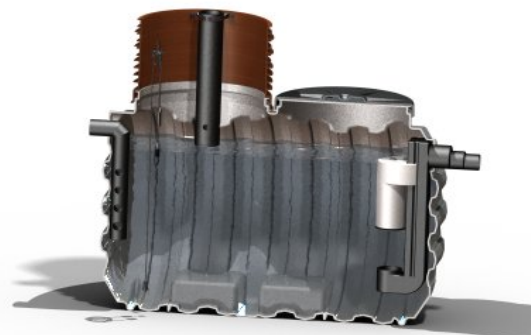
1 Separator olja klasa II.

Pretok = 3l/s
 Izpust = Max 100mg olja na liter
 Volumen= 3000L, Teža = 180 Kg
 Zalogovnik olja = 350L
 DZ =1425, L= 2550, H=1880 (s poviškom)
 Dotok/Iztok = DN110
 By-pass = NE
 Koalescentni čistilni filtri = NE
 Avtomatska zapora = DA
 Integriran vsedalnik = NE
Povišek = 800/630/350, 1 kos



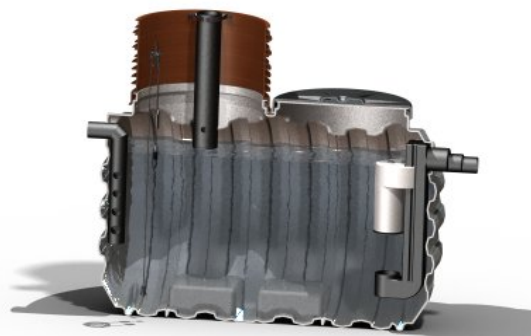
2 Separator olja klasa II.

Pretok = 6l/s
 Izpust = Max 100mg olja na liter
 Volumen = 3000L, Teža = 200 Kg
 Zalogovnik olja = 350L
 DZ =1425, L= 2550, H=1880 (s poviškom)
 Dotok/Iztok = DN125
 By-pass = NE
 Koalescentni čistilni filtri = NE
 Avtomatska zapora = DA
 Integriran vsedalnik = NE
Povišek = 800/630/350, 1 kos



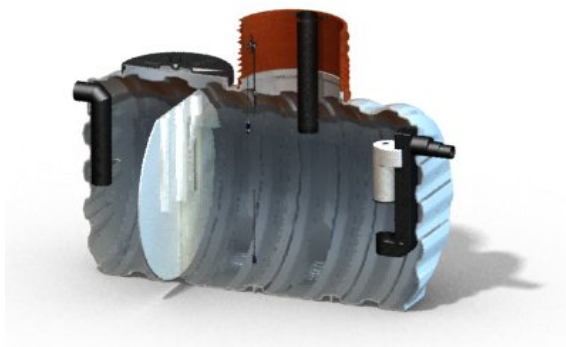
3 Separator olja klasa II.

Pretok = 10l/s
 Izpust = Max 100mg olja na liter
 Volumen = 5000L, Teža = 300 Kg
 Zalogovnik olja = 600L
 DZ =1720, L= 3100, H=2160 (s poviškom)
 Dotok/Iztok = DN160
 By-pass = NE
 Koalescentni čistilni filtri = NE
 Avtomatska zapora = DA
 Integriran vsedalnik = NE
Povišek = 800/630/350, 1 kos



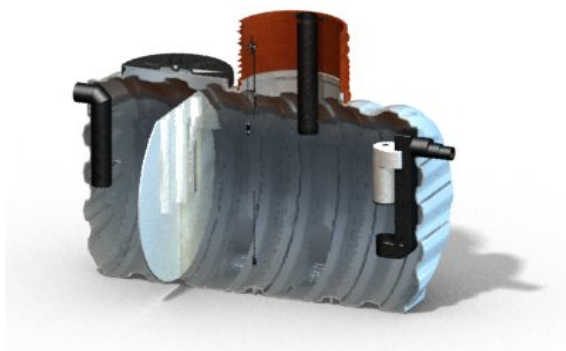
4 Separator olja klasa II.

Pretok = 3l/s
 Izpust = Max 100mg olja na liter
 Volumen = 5000L, Teža = 310 Kg
 Zalogovnik olja = 350L
 DZ =1720, L= 3100, H=2160 (s poviškom)
 Dotok/Iztok = DN110
 By-pass = NE
 Koalescentni čistilni filtri = NE
 Avtomatska zapora = DA
 Integriran vsedalnik = DA (1500 L)
Povišek = 800/630/350, 2 kosa



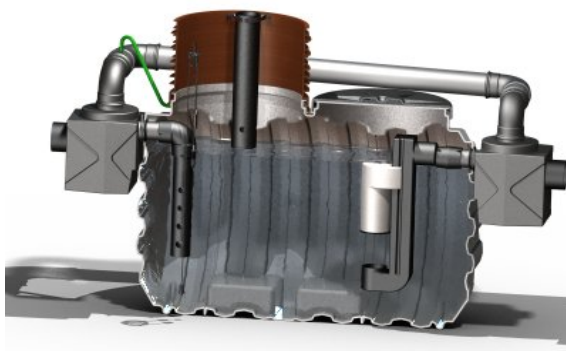
5 Separator olja klasa II.

Pretok = 6l/s
 Izpust = Max 100mg olja na liter
 Volumen = 5000L, Teža = 320 Kg
 Zalogovnik olja = 350L
 DZ =1720, L= 3100, H=2160 (s poviškom)
 Dotok/Iztok = DN125
 By-pass = NE
 Koalescentni čistilni filtri = NE
 Avtomatska zapora = DA
 Integriran vsedalnik = DA (1500 L)
Povišek = 800/630/350, 2 kosa



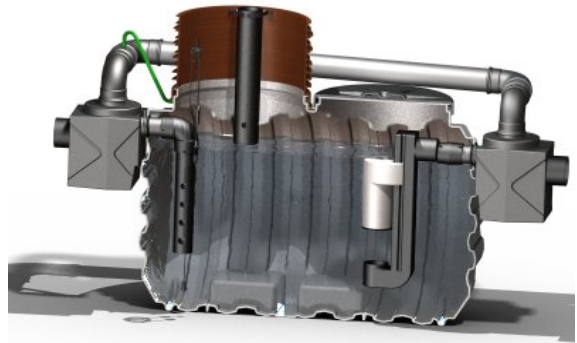
6 Separator olja klasa II.

Pretok = 30l/s (3l/s preko separatorja)
 Izpust = Max 100mg olja na liter
 Volumen= 3000L, Teža = 230 Kg
 Zalogovnik olja = 350L
 DZ =1425, L= 3950, H=1880 (s poviškom)
 Dotok/Iztok = DN200
 By-pass = DA
 Koalescentni čistilni filtri = NE
 Avtomatska zapora = DA
 Integriran vsedalnik = NE
Povišek = 800/630/350, 1 kos



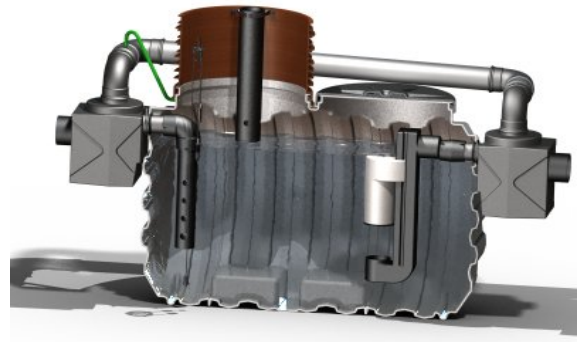
7 Separator olja klasa II.

Pretok = 60l/s (6l/s preko separatorja)
 Izpust = Max 100mg olja na liter
 Volumen= 3000L, Teža = 260 Kg
 Zalogovnik olja = 350L
 DZ =1425, L= 3950, H=1880 (s poviškom)
 Dotok/Iztok = DN250
 By-pass = DA
 Koalescentni čistilni filtri = NE
 Avtomatska zapora = DA
 Integriran vsedalnik = NE
Povišek = 800/630/350, 1 kos



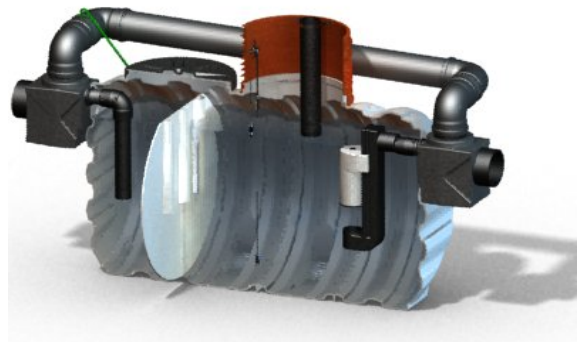
8 Separator olja klasa II.

Pretok = 100l/s (10l/s preko separatorja)
 Izpust = Max 100mg olja na liter
 Volumen= 5000L, Teža = 420 Kg
 Zalogovnik olja = 600L
 DZ =1720, L= 4500, H=2160 (s poviškom)
 Dotok/Iztok = DN300
 By-pass = DA
 Koalescentni čistilni filtri = NE
 Avtomatska zapora = DA
 Integriran vsedalnik = NE
Povišek = 800/630/350, 1 kos



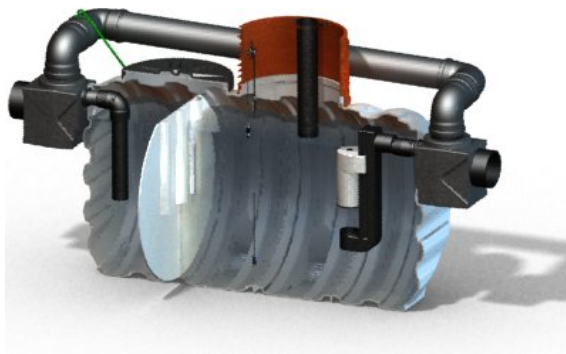
9 Separator olja klasa II.

Pretok = 30l/s (3l/s preko separatorja)
 Izpust = Max 100mg olja na liter
 Volumen = 5000L, Teža = 410 Kg
 Zalogovnik olja = 350L
 DZ =1720, L= 4500, H=2160 (s poviškom)
 Dotok/Iztok = DN200
 By-pass = DA
 Koalescentni čistilni filtri = NE
 Avtomatska zapora = DA
 Integriran vsedalnik = DA (1500 L)
Povišek = 800/630/350, 2 kosa



10 Separator olja klasa II.

Pretok = 60l/s (6l/s preko separatorja)
 Izpust = Max 100mg olja na liter
 Volumen = 5000L, Teža = 450 Kg
 Zalogovnik olja = 350L
 DZ =1720, L= 4500, H=2160 (s poviškom)
 Dotok/Iztok = DN250
 By-pass = DA
 Koalescentni čistilni filtri = NE
 Avtomatska zapora = DA
 Integriran vsedalnik = DA (1500 L)
Povišek = 800/630/350, 2 kosa



11 Separator olja klasa I.

Pretok = 3l/s
 Izpust = Max 5mg olja na liter
 Volumen= 3000L, Teža = 220 Kg
 Zalogovnik olja = 350L
 DZ =1425, L= 2550, H=1880 (s poviškom)
 Dotok/Iztok = DN110
 By-pass = NE
 Koalescentni čistilni filtri = DA (210 plošč)
 Avtomatska zapora = DA
 Integriran vsedalnik = NE
Povišek = 800/630/350, 1 kos



12 Separator olja klasa I.

Pretok = 6l/s
 Izpust = Max 5mg olja na liter
 Volumen= 3000L, Teža = 250 Kg
 Zalogovnik olja = 350L
 DZ =1425, L= 2550, H=2030 (s poviškom)
 Dotok/Iztok = DN125
 By-pass = NE
 Koalescentni čistilni filtri = DA (420 plošč)
 Avtomatska zapora = DA
 Integriran vsedalnik = NE
Povišek = 800/800/500, 1 kos



13 Separator olja klasa I.

Pretok = 10l/s
 Izpust = Max 5mg olja na liter
 Volumen= 5000L, Teža = 400 Kg
 Zalogovnik olja = 350L
 DZ =1720, L= 3100, H=2310 (s poviškom)
 Dotok/Iztok = DN125
 By-pass = NE
 Koalescentni čistilni filtri = DA (630 plošč)
 Avtomatska zapora = DA
 Integriran vsedalnik = NE
 Povišek = 800/800/500, 1 kos



14 Separator olja klasa I.

Pretok = 3l/s
 Izpust = Max 5mg olja na liter
 Volumen = 5000L, Teža = 340 Kg
 Zalogovnik olja = 350L
 DZ =1720, L= 3100, H=2160 (s poviškom)
 Dotok/Iztok = DN110
 By-pass = NE
 Koalescentni čistilni filtri = DA (210 plošč)
 Avtomatska zapora = DA
 Integriran vsedalnik = DA (1500 L)
Povišek = 800/630/350, 2 kosa



15 Separator olja klasa I.

Pretok = 6l/s
 Izpust = Max 5mg olja na liter
 Volumen = 5000L, Teža = 370 Kg
 Zalogovnik olja = 350L
 DZ =1720, L= 3100, H=2310 (s poviškom)
 Dotok/Iztok = DN125
 By-pass = NE
 Koalescentni čistilni filtri = DA (420 plošč)
 Avtomatska zapora = DA
 Integriran vsedalnik = DA (1500 L)
 Povišek = 800/800/500, 1 kos
Povišek = 800/600/350, 1 kos



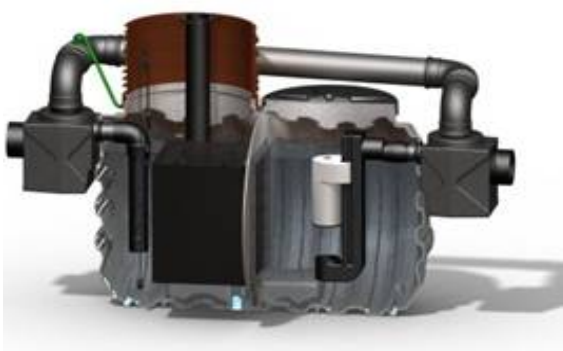
16 Separator olja klasa I.

Pretok = 30l/s (3l/s preko separatorja)
 Izpust = Max 5mg olja na liter
 Volumen= 3000L, Teža = 270 Kg
 Zalogovnik olja = 350L
 DZ =1425, L= 3950, H=1880 (s poviškom)
 Dotok/Iztok = DN200
 By-pass = DA
 Koalescentni čistilni filtri = DA (210 plošč)
 Avtomatska zapora = DA
 Integriran vsedalnik = NE
Povišek = 800/600/350, 1 kos



17 Separator olja klasa I.

Pretok = 60l/s (6l/s preko separatorja)
 Izpust = Max 5mg olja na liter
 Volumen= 3000L, Teža = 310 Kg
 Zalogovnik olja = 350L
 DZ =1425, L= 3950, H=2030 (s poviškom)
 Dotok/Iztok = DN250
 By-pass = DA
 Koalescentni čistilni filtri = DA (210 plošč)
 Avtomatska zapora = DA
 Integriran vsedalnik = NE
Povišek = 800/800/500, 1 kos



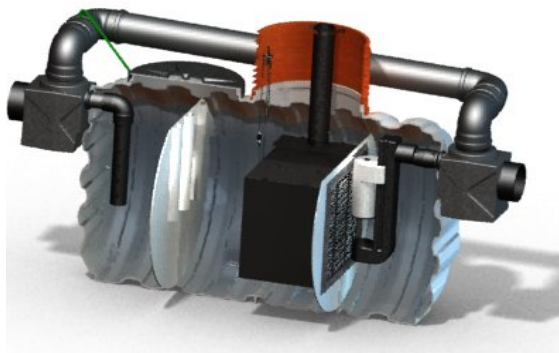
18 Separator olja klasa I.

Pretok = 100l/s (10l/s preko separatorja)
 Izpust = Max 5mg olja na liter
 Volumen= 5000L, Teža = 530 Kg
 Zalogovnik olja = 600L
 DZ =1720, L= 4500, H=2310 (s poviškom)
 Dotok/Iztok = DN300
 By-pass = DA
 Koalescentni čistilni filtri = DA (630 plošč)
 Avtomatska zapora = DA
 Integriran vsedalnik = NE
Povišek = 800/800/500, 1 kos



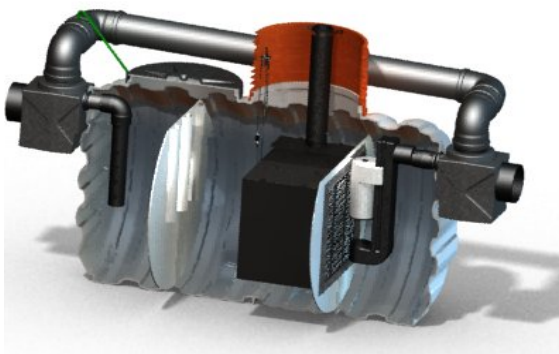
19 Separator olja klasa I.

Pretok = 30l/s (3l/s preko separatorja)
 Izpust = Max 5mg olja na liter
 Volumen = 5000L, Teža = 410 Kg
 Zalogovnik olja = 350L
 DZ =1720, L= 4500, H=2160 (s poviškom)
 Dotok/Iztok = DN200
 By-pass = DA
 Koalescentni čistilni filtri = DA (210 plošč)
 Avtomatska zapora = DA
 Integriran vsedalnik = DA (1500 L)
Povišek = 800/600/350, 2 kosa



20 Separator olja klasa I.

Pretok = 60l/s (6l/s preko separatorja)
 Izpust = Max 5mg olja na liter
 Volumen = 5000L, Teža = 450 Kg
 Zalogovnik olja = 350L
 DZ =1720, L= 4500, H=2310 (s poviškom)
 Dotok/Iztok = DN250
 By-pass = DA
 Koalescentni čistilni filtri = DA (420 plošč)
 Avtomatska zapora = DA
 Integriran vsedalnik = DA (1500 L)
 Povišek = 800/800/500, 1 kos
Povišek = 800/600/350, 1 kos



DODATKI

PEHD pokrov DN800
 PEHD pokrov DN600
 Nastavek 800/600/350
 Nastavek 800/800/500
 Tesnilo za pokrov DN800 ali nastavek




TEKNOLOGISK
INSTITUT

**Testing of oil separator
Propipe oil NS3**

Test report

File number: 1307665/2005

Carried out for:
Pipelife Nederland B.V.

Nederland

Key words: Sewer, oil separator, environmental re

Carried out by:
Danish Technological Institute, Pipe Centre
Gregersensvej
DK-2630 Taastrup
Stig Clausen, Consultant
Ulrik Hindsberger, M.Sc.


TEKNOLOGISK
INSTITUT

**Testing of oil separator
Propipe oil NS6**

Test report

File number: 1307665/2005

Carried out for:
Pipelife Nederland B.V.

Nederland

Key words: Sewer, oil separator, environmental

Carried out by:
Danish Technological Institute, Pipe Centre
Gregersensvej
DK-2630 Taastrup
Stig Clausen, Consultant
Ulrik Hindsberger, M.Sc.


TEKNOLOGISK
INSTITUT

**Testing of oil separator
Pipelife oil separator NS10**

Test report

File number: 246953

Carried out for:
Pipelife Nederland B.V.
Flevolaan 7
NL-1601
Nederland

Key words: Sewer, oil separator, environmental requirements

Carried out by:
Danish Technological Institute, Pipe Centre
Gregersensvej
DK-2630 Taastrup
Stig Clausen, Consultant
Ulrik Hindsberger, M.Sc.



Vsi separatorji olja so stestirani po SIST EN858-1
Testni laboratorij; Danish Technological Institute DTI

Rezultati;

NS3 – 1,6mg/l

NS6 – 3,4mg/l

NS10 – 4,2mg/l

Pipelife Slovenija d.o.o.

Ljubljanska 52a

1236 TRZIN

Tel: 01 530 22 20

Fax: 01 530 22 22

www.pipelife.si

